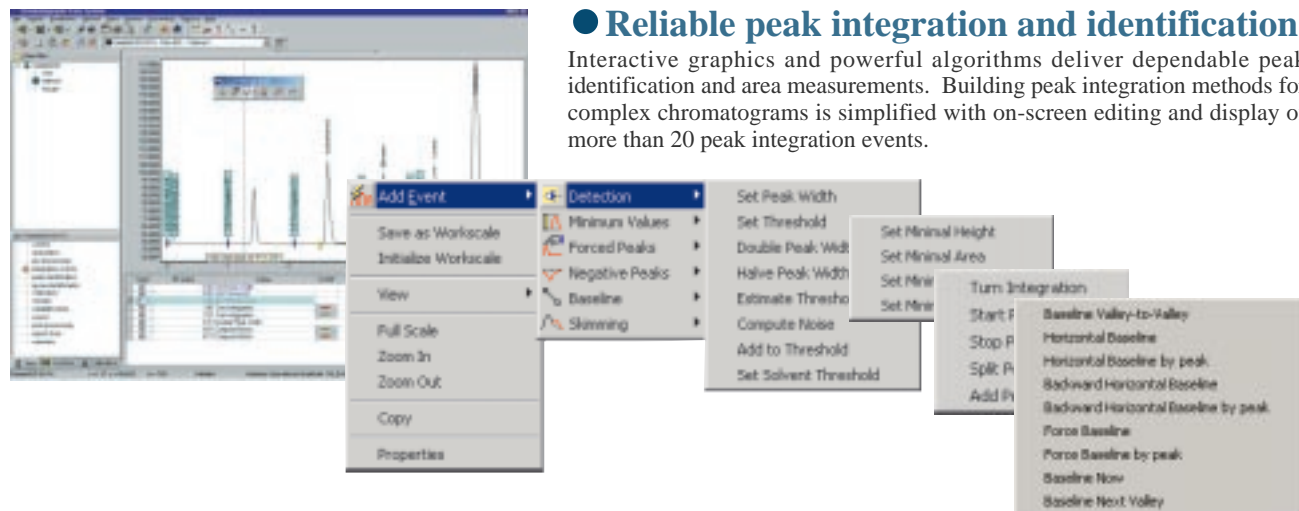


## Data Processing & Integration

Including all standard chromatography calculations

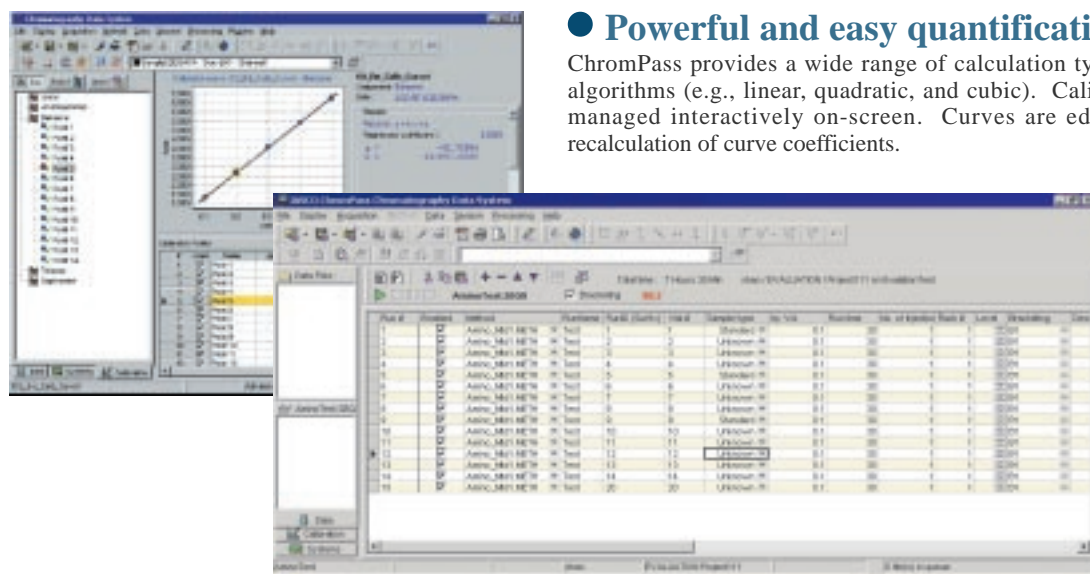
### ● Reliable peak integration and identification

Interactive graphics and powerful algorithms deliver dependable peak identification and area measurements. Building peak integration methods for complex chromatograms is simplified with on-screen editing and display of more than 20 peak integration events.



### ● Powerful and easy quantification

ChromPass provides a wide range of calculation types and curve fitting algorithms (e.g., linear, quadratic, and cubic). Calibration functions are managed interactively on-screen. Curves are edited with immediate recalculation of curve coefficients.



### Bracketing

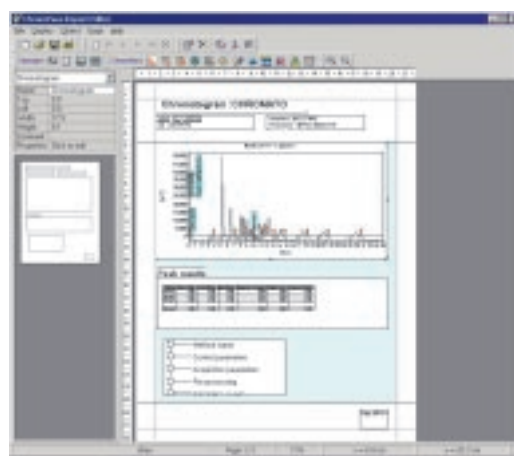
With the normal calibration building mode, the standard chromatograms have to be acquired before the unknown ones. However, the sequence editing in the acquisition order allows you to bracket the unknown chromatograms with the standard runs.

### ● Quick user-defined report format The ChromPass Report Editor

The ChromPass Report Editor enables you to generate, customize, and print reports from the ChromPass Chromatography Data System. Chromatograms, results tables, calibration reports, etc. can be inserted with customized format and presentation and then saved as a report style file, which can be recalled later or edited and saved as another report style file.

### ● Versatile data conversion for exporting data

Convert data files to ASCII text, RTF, Excel, HTML, and AIA Format for exporting to third party software for additional processing or report generation.



● Specifications are subject to change without notice.

**JASCO**

**JASCO INTERNATIONAL CO., LTD.**

4-21, Sennin-cho 2-chome, Hachioji, Tokyo 193-0835, Japan Tel: +81-426-66-1322 Fax: +81-426-65-6512 Internet: <http://www.jascoinc.co.jp/english/index.html>

**JASCO INCORPORATED**, 8649 Commerce Drive, Easton, Maryland 21601-9903, U.S.A Tel: +1-800-333-5272 Tel: +1-410-822-1220 Fax: +1-410-822-7526 Internet: <http://www.jascoinc.com>

**JASCO EUROPE s.r.l.**, Via Confalonieri 25, 22060 Cremella (Co), Italy Tel: +39-039-956439 Fax: +39-039-958642 Internet: <http://www.jasco-europe.com>

**JASCO Labor-und Datentechnik GmbH Deutschland**, Robert-Bosch-Strasse 11, 64823 Gross-Umstadt, Germany Tel: +49-6078-74949 Fax: +49-6078-74006 Internet: <http://www.jasco.de>

**JASCO (UK) Ltd.**, 18 Oak Industrial Park, Chelmsford Road, Great Dunmow, Essex, CM6 1XN, U.K. Tel: +44-1371-876988 Fax: +44-1371-875597 Internet: <http://www.jasco.co.uk>

**JASCO Eastern Europe Information Office**, H-1113, Karolina UT 29-31, Budapest, Hungary Tel: +36-1-4669549 Fax: +36-1-2093538

**JASCO France s.a.r.l.**, 60 Bd du Maréchal Juin, 44100-Nantes, France Tel: +33-2-40430043 Fax: +33-2-40432437 Internet: <http://www.jascofrance.fr>

**JASCO Benelux B.V.**, Industrieweg 68-3606 AS Maarssen, Netherlands Tel: +31-346-556699 Fax: +31-346-554619 Internet: <http://www.jasco.nl>

**JASCO Analitica Spain S.L.**, Emiliano Barral 13-B, 28043 Madrid, Spain Tel: +34-91-361-2440 Fax: +34-91-356-7058 Internet: <http://www.jasco-spain.com>

**JASCO Scandinavia AB**, Ågatan 32, 431 35 Mölndal, Sweden Tel: +46-31-27 03 60 Fax: +46-31-746 85 90 Internet: <http://www.jascoscandinavia.se>

Serving the global marketplace  
with Analytical Instrumentation  
**JASCO Corporation**  
2927-6, Mihama-cho, Machida, Tokyo 192-0237, Japan  
<http://www.jasco.co.jp>

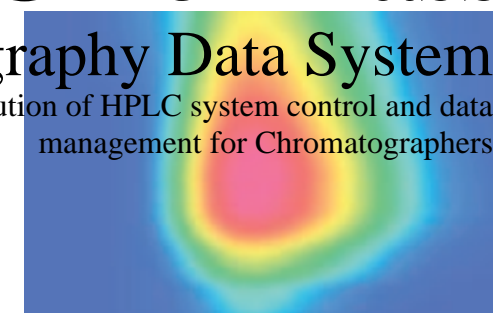
C6820-0301 Printed in Japan

Powerful HPLC software suite

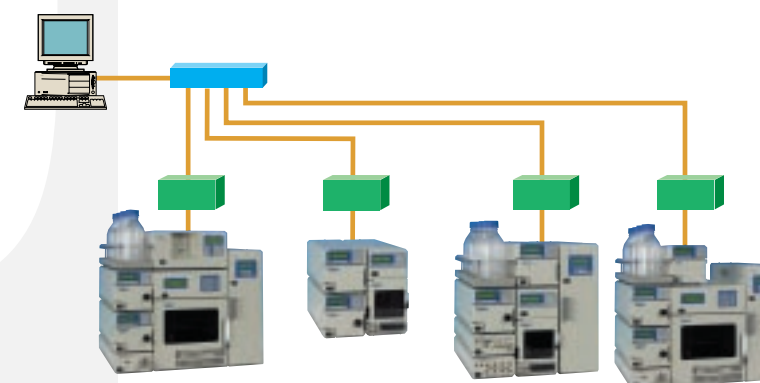
# ChromPass

## Chromatography Data System

The total solution of HPLC system control and data management for Chromatographers



The JASCO ChromPass Chromatography Data System (ChromPass) is a state-of-the-art, chromatography software platform that provides JASCO HPLC system control, data acquisition, processing, interpretation, and reporting with features to support laboratories under compliance with 21 CFR Part 11. A choice of complete pull-down task menus, user-friendly icons, and easily accessible popup menus enable new users to quickly complete their tasks, making ChromPass a very easy-to-learn software. ChromPass includes the ChromPass Configuration Manager, which allows the user to declare, configure, manage HPLC systems, and define the user base, and the ChromPass Report Editor which enables the user to generate, customize, and print reports.



### Tools For Regulatory Compliance

Meeting the stringent requirements of 21 CFR Part 11

- Access rights control for secure systems
- Audit trail function for tracking records
- Electronic signature for record integrity
- Electronic records in PDF format

### System Control & Data Acquisition

Simplified user interface for easy set-up and operation

- System networking for full instrument control
- Extending control to PDA detector
- Real time system and data monitoring
- Automation with user customized sequence

### Data Processing & Integration

Including all standard chromatography calculations

- Reliable peak integration and identification
- Powerful and easy quantification
- Quick user-defined report format
- Versatile data conversion for exporting data

**JASCO**

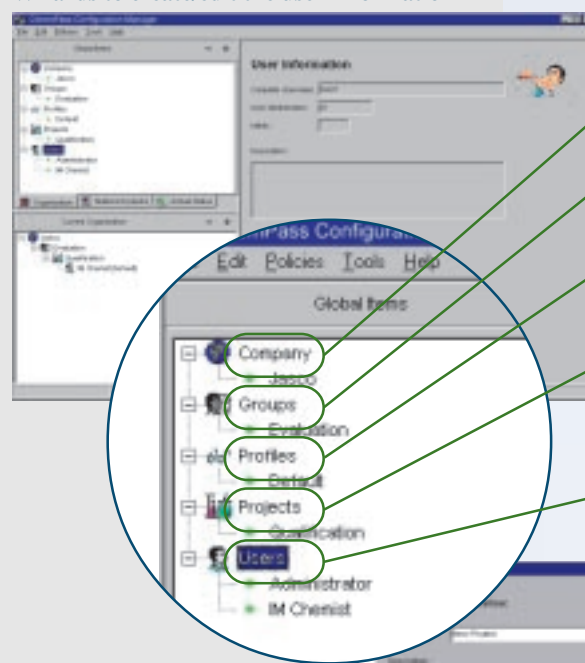
## Tools For Regulatory Compliance

### Meeting the stringent requirements of 21 CFR Part 11

#### ● Access rights control for secure systems

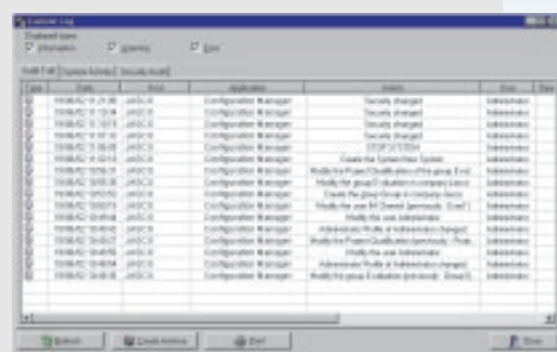
The ChromPass Configuration Manager provides the means to create, configure and maintain detailed information regarding system security, user management, data path, instrument control, etc. User profiles defined in the Configuration Manager control the users access to methods, data, and reports. Security is managed through user ID and password checks.

#### Wizards to create/edit the user information



#### The user base to be defined by the ChromPass Configuration Manager

- Company :** This is the name of the company where the JASCO ChromPass Chromatography Data System is installed.
- Group :** A group is a logical entity, which is a part of the company, for example you can have QC group, research group, etc.
- Profile :** A profile is the set of rights assigned to a user. User access to software features may be allowed or denied according to their profile.
- Project :** A project is a logical entity which is a part of a group, for example, inside the QC group, different projects such as molecular analysis or techniques can exist. Each project can have its own shared data such as method or report style.
- User :** A user is a physical entity, and must be associated to a project inside a group / company. Users will have certain specific rights.



Archive of audit trail including all changes with the reasons for the changes

#### ● Audit trail function for tracking records

A rigorous Audit Trail tool records and archives all operations and file modifications with an automatically incremented version number. Details of various file versions, e.g., chromatograms, methods, sequences, and calibration curves, are viewed on-screen.

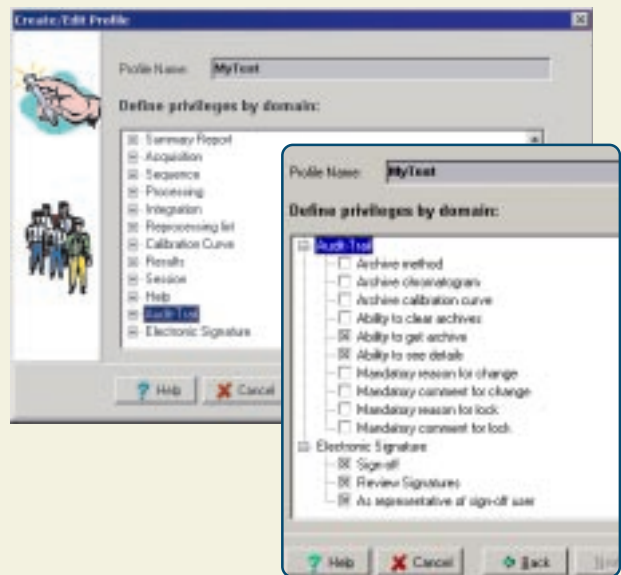
#### ● Electronic signature for record integrity

Process chromatograms and corresponding records can be locked when electronically signed by authorized users. Only the same authorized users can unlock these files.

#### ● Electronic records in PDF format

When final reports are issued, approved, and electronically signed, a PDF file is automatically generated. All signature/locking operations are tracked in the audit trail.

#### Access control through user profiles

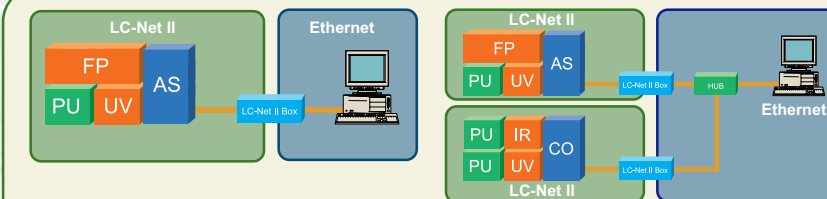


The Create/Edit Profile wizard defines privileges of users to access the functions listed. Check the box in front of the function to allow it, or uncheck to deny it. If you uncheck a function, it will not be accessible for the corresponding users in this profile.

## System Control & Data Acquisition

### Simplified user interface for easy set-up and operation of flexible HPLC systems

The JASCO ChromPass Chromatography Data System enables the user to drive stand-alone PC workstation with up to four JASCO HPLC systems. The control method is fully integrated and can cover a wide range of selections from fully controlled HPLC systems (using remote control drivers) to signal acquisition-only configurations (using A/D signal conversion).

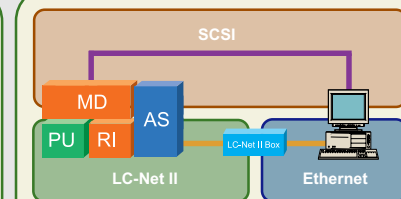
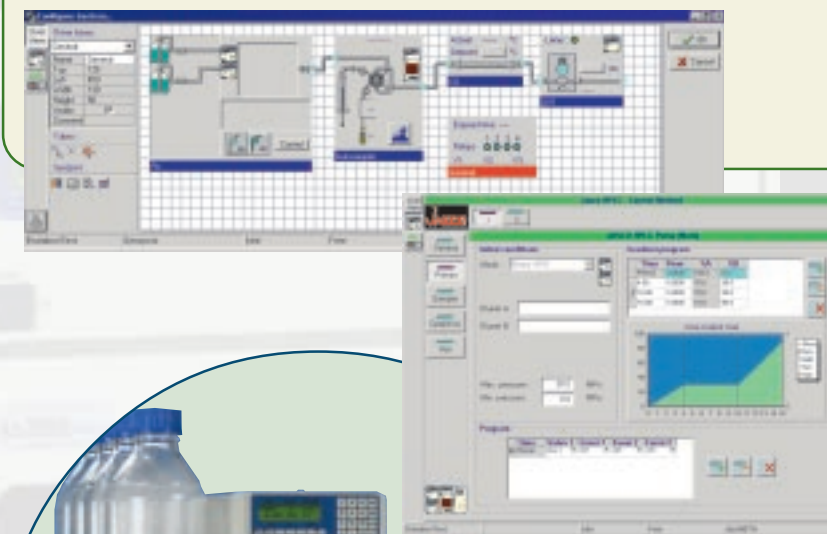


#### ● System networking for full instrument control

The JASCO HPLC modules are connected with the LC-Net II Box via LC-Net II cables for remote control. The Box is connected with a PC through Ethernet. The LC-Net II Box provides A/D signal conversion for acquisition of analog data from detectors. The box accepts up to four channels of signal input for one system each.

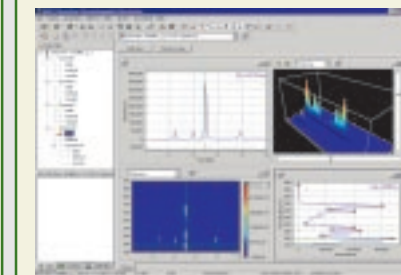
#### ● Intuitive GUI to define a HPLC system configuration

ChromPass enables users to configure a HPLC system and create a diagram of the system by using the synopsis window.

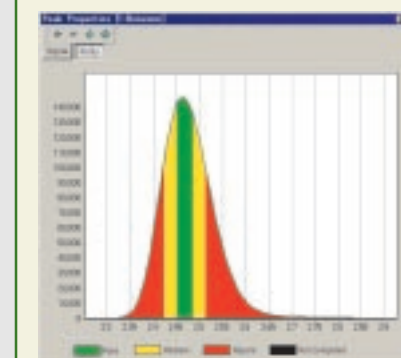


#### ● PDA control via SCSI

The ChromPass can control the Model MD-2010/2015 Diode Array Detector via SCSI interface.



Isocontour and 3D views are available in real time. Powerful peak identification algorithms are performed automatically at the end of each run. Numerical and visual confirmation of peak purity further assure data quality.



#### ● Real time system and data monitoring

Data acquisition and system status views are available in real time during analytical runs.



#### ● Automation with user-customized sequence

Automation sequence is accomplished with one screen for data acquisition, post-run data manipulation, report printing, etc. The user-customized sequence can handle multiple samples and versatile functions.

