

JASCO HPLC Control Software for EZChrom *Elite*[™] Chromatography Data System

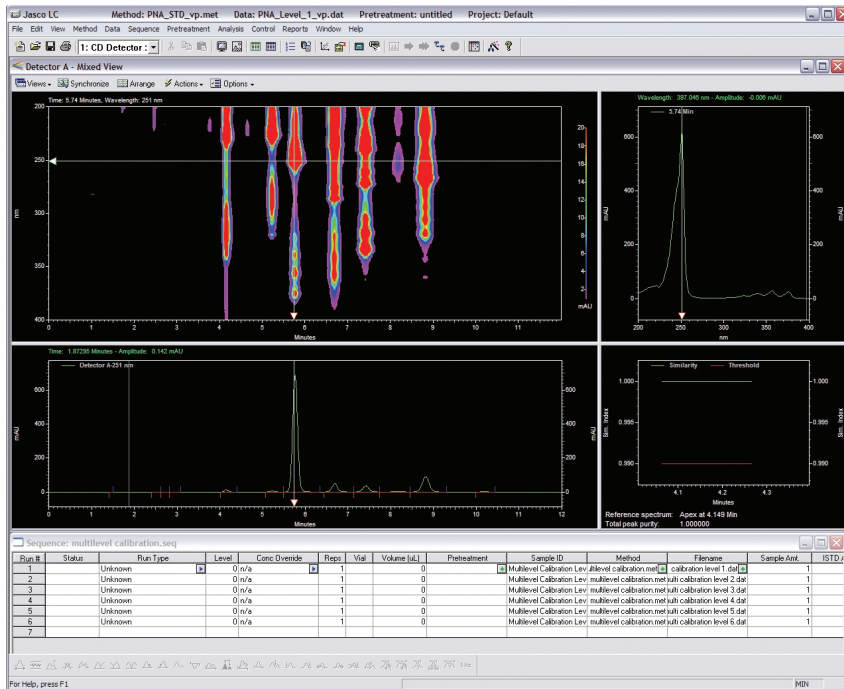


Figure 1. EZChrom *Elite* conveniently displays data results in a single screen for easy viewing. With the optional JASCO PDA control, 3D spectral information is also collected with each run.

Key Benefits

- Fully integrated instrument control and data handling of Jasco 2000, 1500 series HPLC and X-LC system through EZChrom *Elite*.
- Support multi-vendor instrumentation in a single CDS solution.
- Select flexible EZChrom *Elite* CDS configurations from single user/single instrument workstations to multi-user/multi-instrument client/server.
- Operate the Jasco HPLC with many GLP/GMP features including features addressing 21 CFR Part 11 rules (built-in audit trails, electronic signatures, user security, etc.).

Control the JASCO HPLC with EZChrom *Elite*

JASCO HPLC systems are in widespread use in HPLC laboratories throughout the world. Agilent Technologies now provides JASCO HPLC Control Software as an optional software add-on for EZChrom *Elite*. This software provides instrument control for a wide range of JASCO autosamplers, pumps, and detectors. JASCO PDA detectors also require the JASCO PDA Control Software. The JASCO 1500 and 2000 Series HPLC systems and the X-LC HPLC system are supported.

Flexible Control of JASCO Pumps and Detectors

The software provides full pump control; all gradient information, flow, auxiliary pump, events and valve controls and a Time Program to specify flow and concentrations as a function of time are provided. Multiple pumps can be configured for a single instrument. JASCO UV and Fluorescence detectors can be setup in software to specify wavelength, autozero controls, detector outputs as well as a time program to specify desired wavelengths and other parameters as a function of time.

Sensible Diode Array Data Handling

EZChrom *Elite*'s JASCO HPLC PDA Control Software provides unlimited number of analysis and data acquisition channels for the PDA detectors. All data are saved in one file, so any wavelength or spectrum can be recalled for review after analysis. You'll never lose a compound because it was below the threshold.

Special Direct Control Mode Displays All Information

The Direct Control screen for JASCO HPLC shows all status information in a single view. Nothing is hidden. Users can easily see when an instrument parameter is not yet at Setpoint, at the Setpoint, or not used in the particular method. Modification of these settings directly from EZChrom *Elite* is provided.

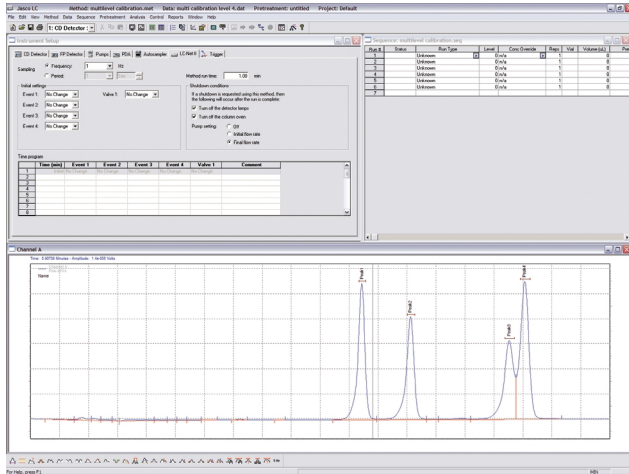


Figure 2. EZChrom *Elite* conveniently displays all data for easy viewing.

Autosampler Control is Simple and Sophisticated

For simple operation, just load the autosampler and start. For more involved operation, the user may select different available functions, including Pretreatment Dilution, Reagent Addition, or Derivatization.

These advanced routines may be saved as a pretreatment file, so a sophisticated pre-injection sequence can be developed just once, and then used with any other method or sample that applies.

A special graphical Autosampler Tray routine provides a visual representation of each Autosampler Tray type including standard, Eppendorf, tapered, Micro-vial, 96 well Microplate, 384 well Microplate, and deep well 96 well Microplate.

For control of the Jasco X-LC system, a special full download of instrument parameters for multiple injections is supported so that the control of the X-LC can include overlapped sample preparation operations while an injection is occurring. This provides higher throughput in X-LC operations.

Powerful Data Analysis Through EZChrom *Elite*

Data collected by EZChrom *Elite* can be subjected to a full range of flexible data analysis. Overlay runs, perform System Suitability calculations, and create a wide variety of data reports. Built in GLP/GMP features in EZChrom *Elite* ensure that JASCO results are securely controlled with a full featured Audit Trail to track all changes. Additionally, the built-in features for Electronic Signature enable all results to be handled according to 21 CFR Part 11 rules.

Special EZChrom SI Version

In addition to standard EZChrom *Elite* Stand-Alone or Client/Server, a special EZChrom SI (Single Instrument) version for users who have only one JASCO HPLC and who require only basic EZChrom *Elite* features is available. This provides EZChrom capabilities with the JASCO HPLC instrument control for controlling a single JASCO HPLC.

Recommended EZChrom Version

EZChrom *Elite* version 3.1.7 is required for control of all Jasco instruments described in this data sheet. Earlier versions of EZChrom *Elite* can be easily upgraded to version 3.1.7 by contacting your local Agilent sales representative.

Minimum Firmware Requirements

JASCO HPLC control software supports the following modules (JASCO HPLC PDA Control Software is also required for PDA control):

1500 Series

Model Name	Rom Version
PU-1580 Isocratic Pump	2.24
PU-1580i Isocratic Pump	2.15
PU-1585	2.17
PU-1586	2.24
PU-1587	2.15
PU-1580-CO2	2.25
AS-1550 Autosampler	1.48
AS-1555 Autosampler	1.48
AS-1559 Autosampler	1.39
CO-1560 Column Oven (Ver. A-C)	1.13
CO-1560 Column Oven (Ver. D)	5.11
CO-1565 Column Oven (Ver. A)	1.12
CO-1565 Column Oven (Ver. B)	5.02
CO-1565 Column Oven (Ver. C)	5.04
UV-1570 UV/VIS Detector	1.18
UV-1575 UV/VIS Detector	1.18
FP-1520 Fluorescence Detector	1.41
MD-1510 PDA Detector	2.26
MD-1515 PDA Detector	2.26
CD-1595 Chiral Detector	3.08

2000 Series

<u>Model Name</u>	<u>Rom Version</u>
PU-2080	6.20
PU-2080i	6.20
PU-2085	6.20
PU-2085i	6.25
PU-2086	6.20
PU-2086i	6.22
PU-2087	6.20
PU-2087i	6.33
PU-2089 Quaternary Pump	6.20
PU-2089i Quaternary Pump	6.20
PU-2088	6.14
PU-2080 100MPa	6.35
PU-2085 100MPa	6.36
PU-2080-CO2	6.41
PU-2086-CO2	6.20
PU-2088-CO2	6.14
AS-2050 Autosampler	6.27
AS-2050i Autosampler	6.27
AS-2051 Autosampler	6.27
AS-2051i Autosampler	6.27
AS-2055 Autosampler	6.27
AS-2055i Autosampler	6.27
AS-2057 Autosampler	6.27
AS-2057i Autosampler	6.27
AS-2059 Autosampler	6.33
AS-2059-SF	6.37
CO-2060 Column Oven	6.24
CO-2067 Column Oven	6.24
MD-2010 PDA Detector	2.26
MD-2015 PDA Detector	2.26
FP-2020 Fluorescence Detector	6.21
FP-2025 Fluorescence Detector	6.21
UV-2070/75 UV/VIS Detector	6.30
CD-2095 Chiral Detector	6.23

X-LC Series

<u>Model Name</u>	<u>Rom Version</u>
X-LC 3080PU	6.39
X-LC 3085PU	6.42
X-LC 3067CO	6.25
X-LC 3059AS	6.37
X-LC 3070UV	6.34
X-LC 3020FP	6.25
X-LC 3095CD	6.25
LC-Net II ADC Controller	4.32

Visit www.agilent.com/chem/scisw

or call toll free **1-800-227-9770**

(U.S. and Canada).

In other countries, please call your local
Agilent Technologies analytical sales office or
Authorized Agilent Technologies Distributor.

This information is subject to change without notice.

© Agilent Technologies, Inc. 2006

Printed in U.S.A. March 10, 2006

5989-4297EN



Agilent Technologies